

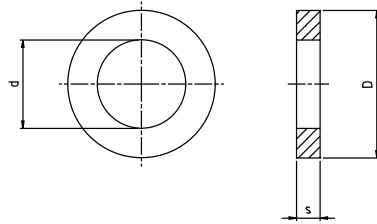
# RONDELLE PIANE PER CARPENTERIA LEGGERA

PLAIN WASHERS FOR STEEL CONSTRUCTIONS



DIN 7989/1

Material: Acciaio  
 Durezza: 100 - 250 HV  
 Tolleranze e condizioni tecniche:  
 DIN 7989/1 e UNI 6602 C  
 Finitura superficiale: Grezza



DIN 7989/1

Material: Steel  
 Hardness: 100 - 250 HV  
 Tolerances and technical conditions:  
 DIN 7989/1 and ISO 4759/3 C  
 Surface finish: Plain

Misure in mm - Dimensions in mm

Per Viti For thread	d	D	s	Peso/Mass Kg/1000
M 12	13,5	24	8	19,40
M 14	15,5	28	8	26,80
M 16	17,5	30	8	29,30
M 18	20	34	8	37,30
M 20	22	37	8	43,70
M 22	24	39	8	46,20
M 24	26	44	8	62,10
M 27	30	50	8	78,90
M 30	33	56	8	101,00